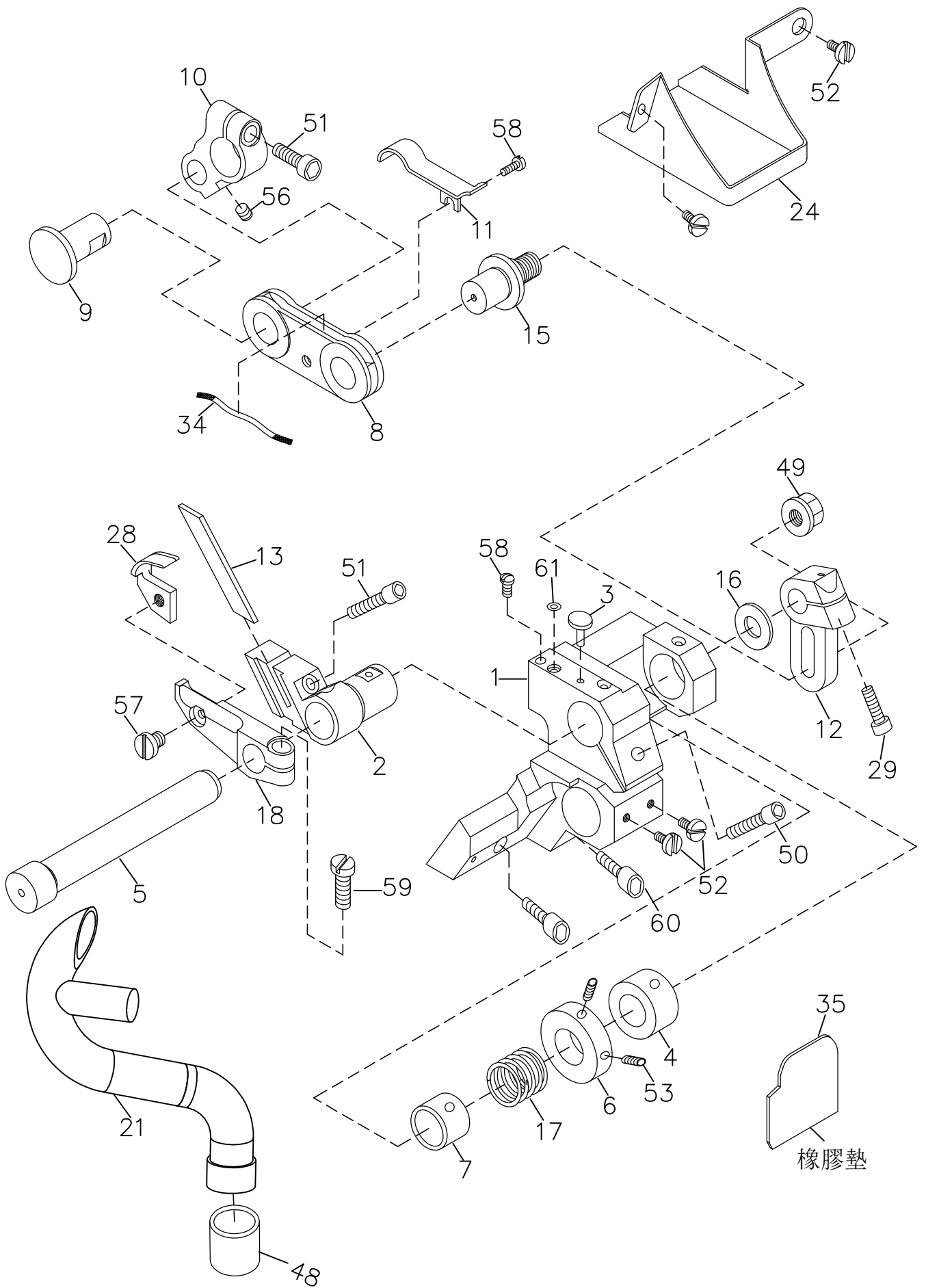


TYPICAL

GK3 1600 YD3-5L

直驱自动剪线筒式绷缝机

左切刀

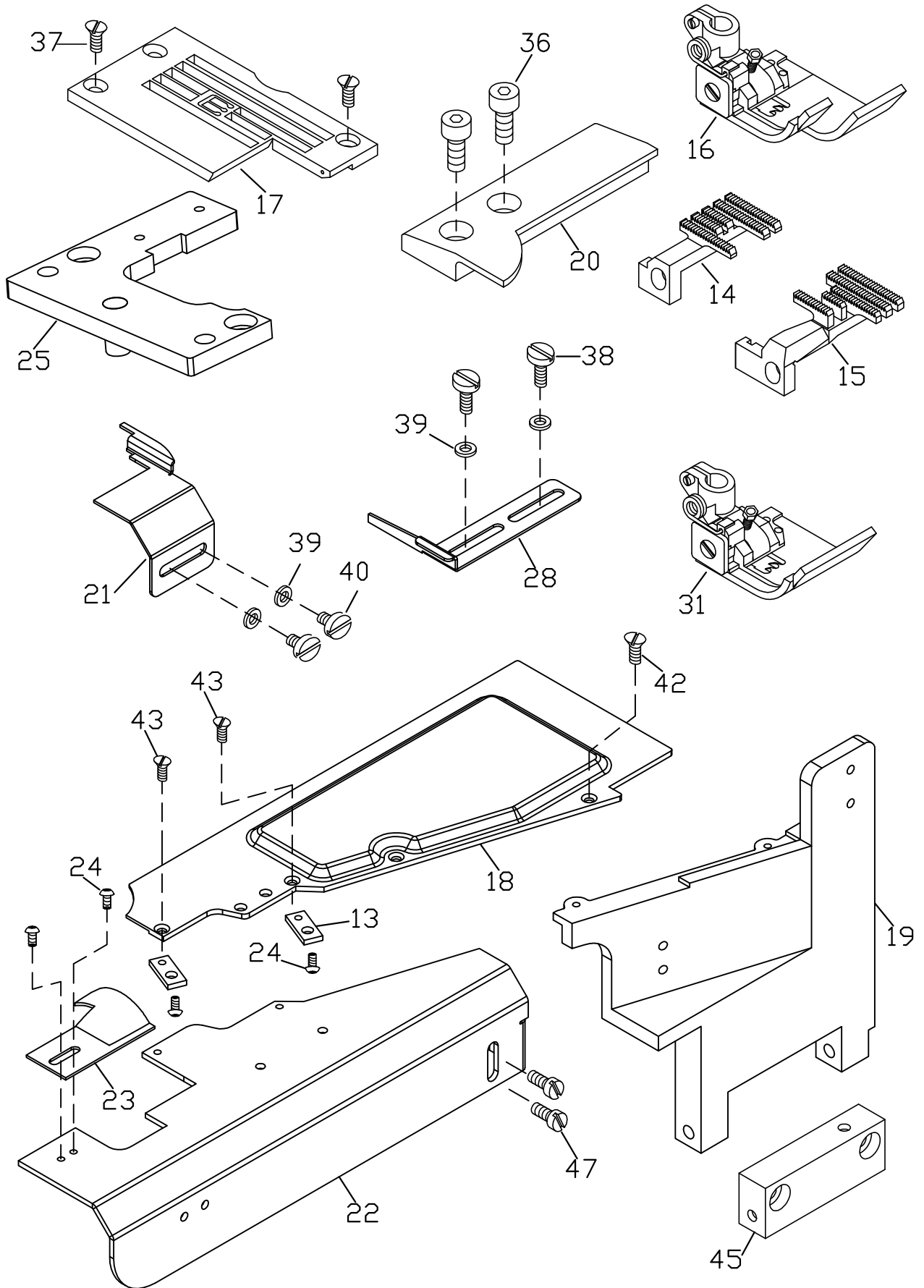


LEFT-HAND KNIFE DEVICE

左修刀驅動機構

25

Ref. NO.	Parts NO.	Description	零件名稱	Amt. Req.
1	25-011	Knife Base	刀架固定座	1
2	25-02	Lower Knife Holder	下切刀座	1
3	25-03		橡膠墊	1
4	25-04	Self-Lubriated Bush(Larger)	自潤襯套(大)	1
5	25-05	Feed Shaft Level	刀嘴方位調整軸	1
6	25-06	Coller	限位環	1
7	25-07	Self-Lubriated Bush(Small)	自潤襯套(小)	2
8	25-08	Connecting Level	連接桿	1
9	25-09	Pin	連接銷	1
10	25-10	Feed Shaft Level	調整桿	1
11	25-11	Oil Wick Cover	油蕊沖件	1
12	25-12	Trimming Adjuster	刀距調節器	1
13	25-13	Lower Knife	下切刀	1
14				
15	25-15	Adjusting Screw Pin	調節螺軸	1
16	7870716	Separator Ring	隔片	1
17	25-17	Spring	彈簧	1
18	25-18	Upper Knife Holder	活動刀座	1
21	25-21	Suction Pipe	吸風彎管	1
24	25-24	Oil Protection Box	防油盒	1
28	25-28	Upper Knife	彎切刀(活動刀)	1
29	SF226	Screw(M4-0.7×12)	螺絲	1
34	25-34	Oil Wick	油蕊	1
35	25-35	Anti-Shock Rubber	橡膠墊	1
48	25-48	Rubber Ring	橡膠圈	1
49	NF31	Nut	螺帽	1
50	25-50	Screw(M5-0.8×14)	螺絲	2
51	7870202	Screw(M4-0.7×14)	螺絲	2
52	26-38	Screw(M4-0.7×5)	螺絲	4
53	7870229	Screw(M4-0.7×4)	螺絲	2
56	7870229	Screw(M4-0.7×5)	螺絲	1
57	25-57	Screw(SM9/64-40×4.5)	螺絲	1
58	7870712	Screw(M3-0.5×5)	螺絲	2
59	7870202-1	Screw(SM11/64-40×12)	螺絲	1
60	7870628	Screw(M5-0.8×12)	螺絲	2
61	25-61	O-ring	O型環	1

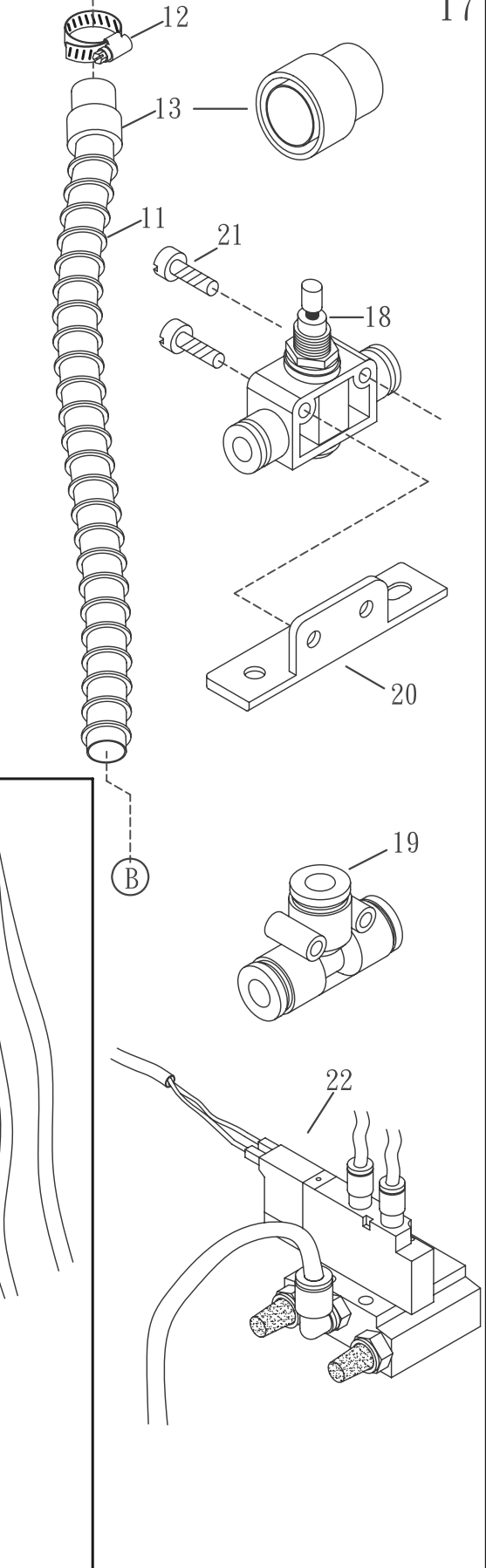
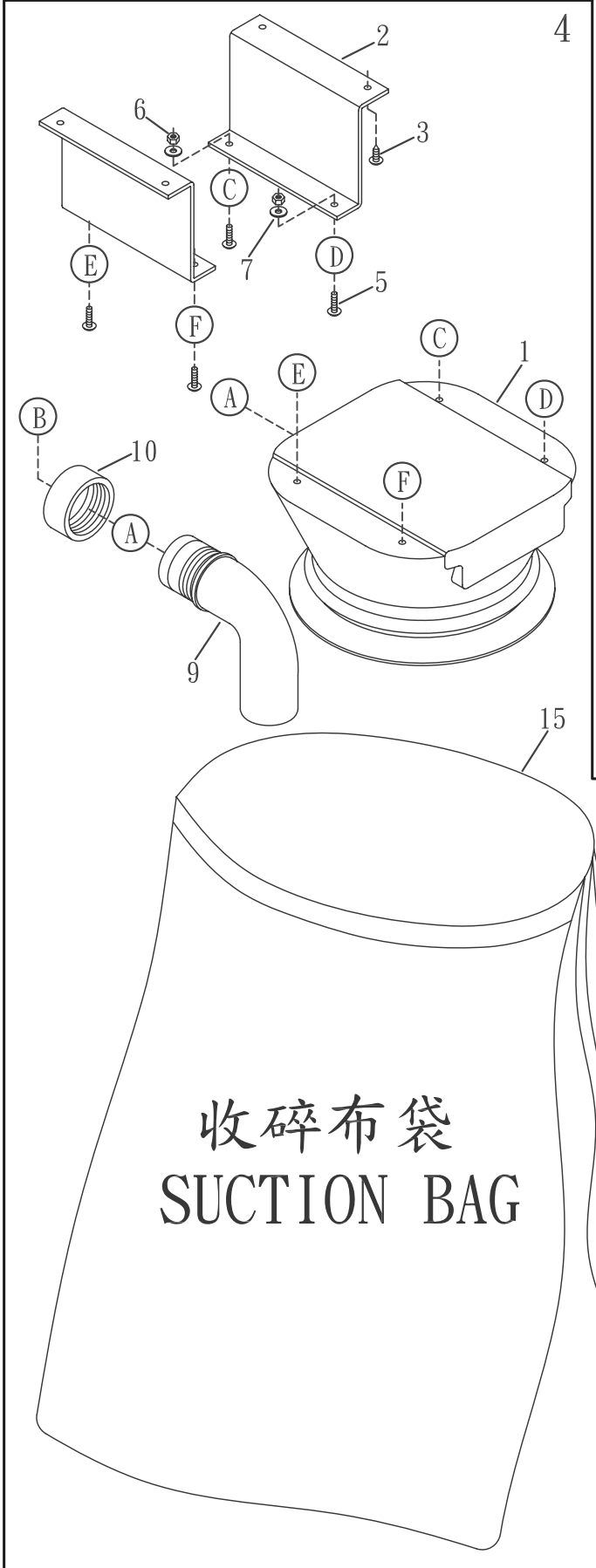


LEFT-HAND KNIFE DEVICE

左修刀配件機構

26

Ref. NO.	Parts NO.	Description	零 件 名 稱	Amt. Req.
13	26-13		连接块	2
14	26-14	Main Feed Dog	左修主齒	1
15	26-15	Differential Feed Dog	左修差動齒	1
	26-16 248			
16	26-16-1 356	Presser Foot	右邊加長壓腳	1
	26-16-2 364			
	26-17 248			
17	26-17-2 356	Stitch Plate	左修刀針板	1
	26-17 364			
18	26-18	Front Cover (Upper)	前蓋頂座	1
19	26-19	Front Cover (Lower)	前蓋底座	1
20	26-20-1	Supplementary Cover	滑件補助蓋	1
21	26-21	Hemming Folder (Left)	布誘導器 (左)	1
22	26-22	Knife Guard	刀架安全護蓋	1
23	26-23	Suction Cover	風管蓋	1
24	26-24	Screw (M3-0.5)	螺絲	2
25	26-25	Stitch Plate Support	左修刀針板支架	1
28	26-28	Adjusting Folder Plate	可調式擋布板	1
36	7870256	Screw (M4-0.7×10)	螺絲	2
37	7870232	Screw (M3-0.5×7.4)	螺絲	2
38	26-38	Screw (M4-0.7×5)	螺絲	2
39	7870323	Washer	墊片	4
40	26-38	Screw (M4-0.7×5)	螺絲	2
42				
43	7870323	Screw (M3-0.5×4.5)	螺絲	4
45	7870228	Front Cover Hinge	前蓋鉸鏈	1
47	7870256	Screw (M4-0.7×8)	螺絲	1

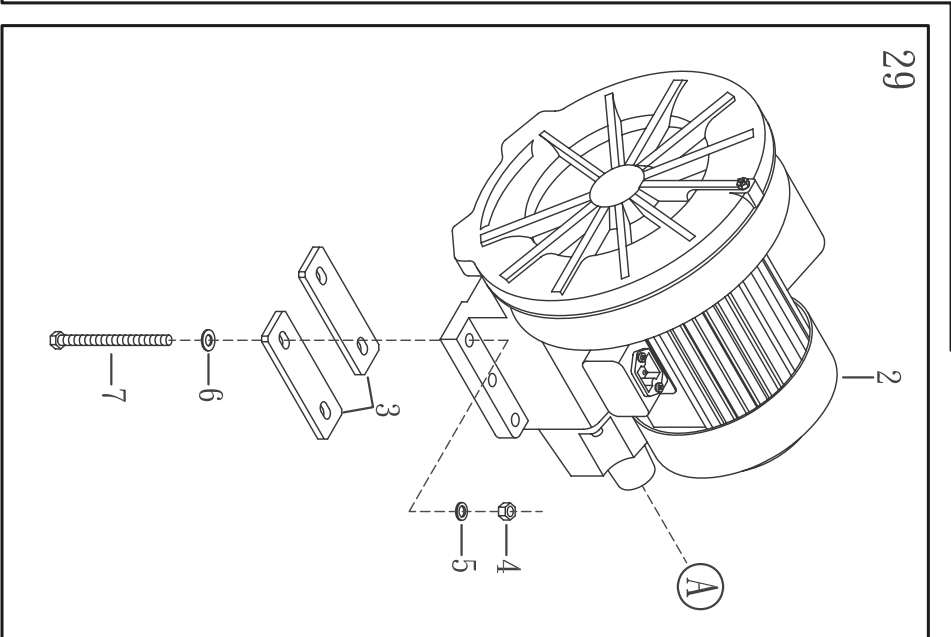
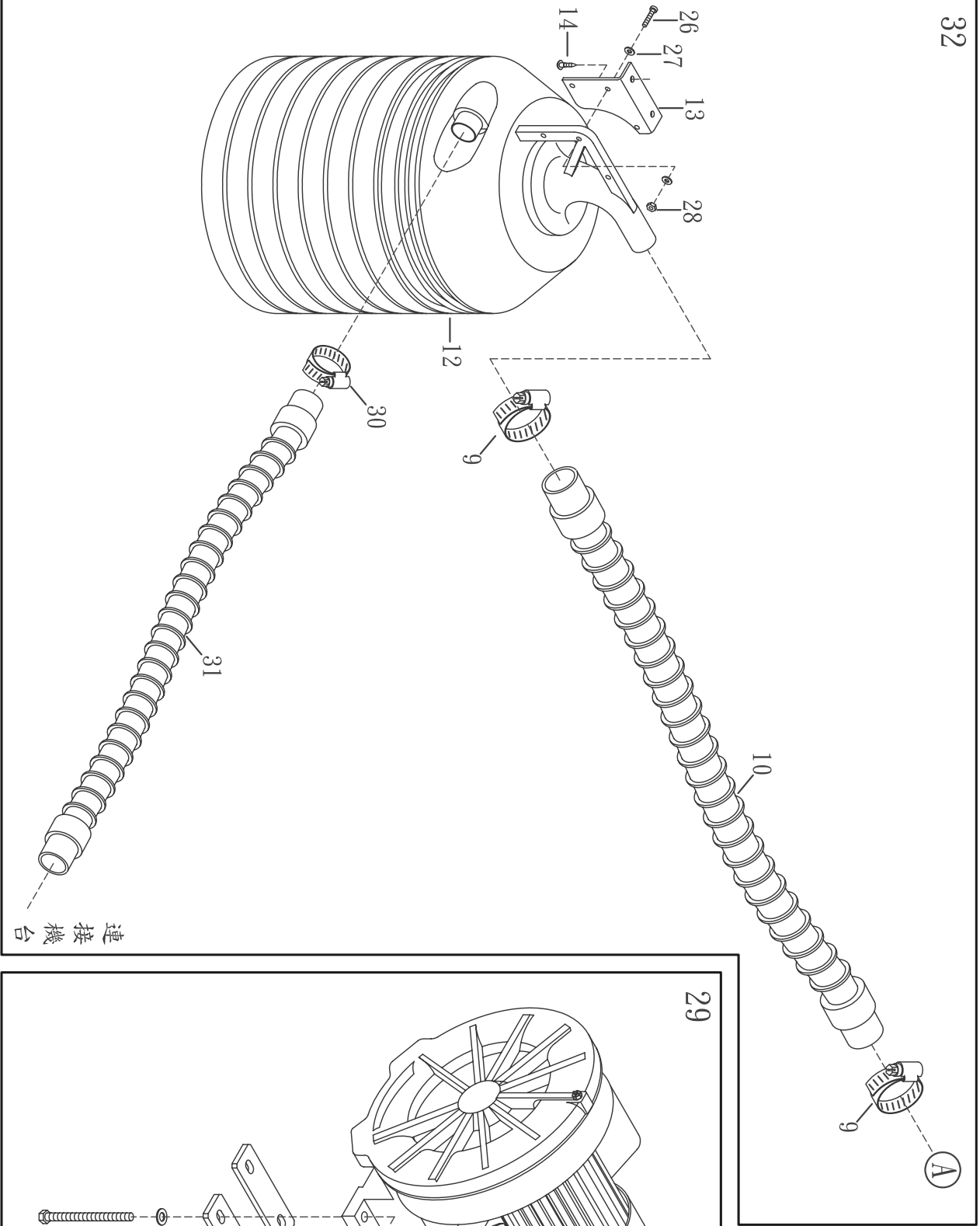


收碎布袋
SUCTION BAG

SUCTION ACCESSORIES左修刀氣壓吸風整組

27

<u>Ref.</u> <u>NO.</u>	<u>Parts</u> <u>NO.</u>	<u>Description</u>	<u>零 件 名 稱</u>	<u>Amt.</u> <u>Req.</u>
1	27-01	Suction Bag Holder	碎布袋固定座	1
2	27-02	Z-Type Bracket	Z型固定支架	1
3	27-03	Wooden Screw	木螺絲	4
4	27-04	Suction Bag Competeset	C-100廢布和線頭收集組	1
5	27-05	Screw	螺絲	4
6	27-06	Nut	螺帽	4
7	27-07	Washer	華司	4
8				
9	27-09	Plastic Tube	塑膠彎管	1
10	27-10	Plastic Nut	塑膠螺帽	1
11	27-11	Suction Pipe	螺紋吸風管	1
12	27-12	Pipe Fastener	緊縮環	1
13	27-13	Plastic Connector	塑膠接頭(25灰色)	1
14				
15	27-15	Suction Bag	收碎布袋	1
16	27-16	Suction Bag-Pedal Switch Set	A-100ST風布袋-腳踏開關組	1
17	27-17	Suction Pipe	N600-螺紋吸風管整組	1
18	27-18	Suction Regulator	調節閥	1
19	27-19	T-Type Air Connector	風管三通接頭	1
20	27-20	Regulator Support	調節閥座	1
21	27-21	Screw (SM9/64-40×17)	螺絲	1
22	27-22	Air Solenoid	1/8PT 2位電磁閥(單座)	1



Suction Device for N600(Electric Type)

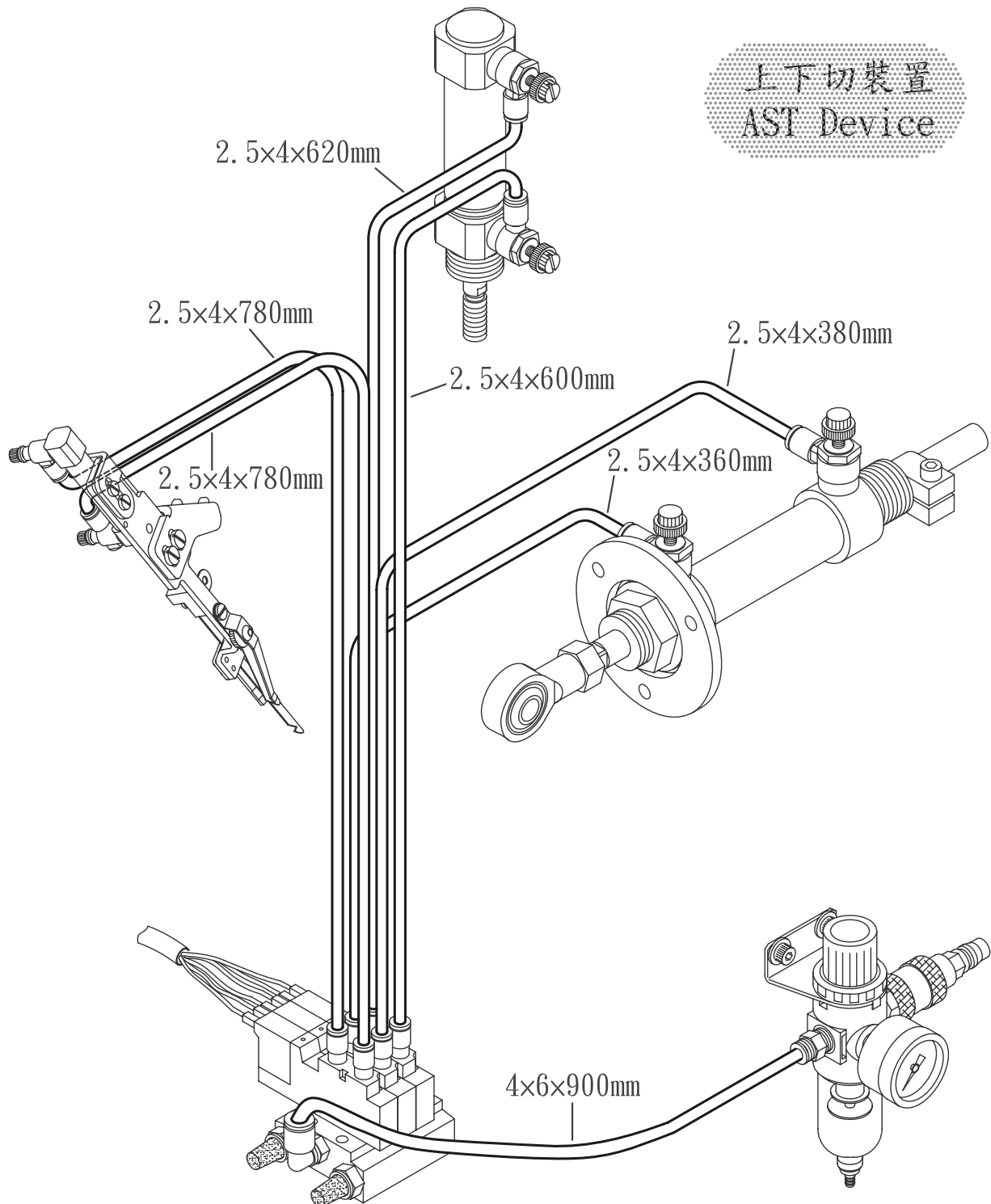
左修刀馬達吸風機構

28

Ref. NO.	Parts NO.	Description	零件名稱	Amt. Req.
1				
2	28-02	Suction Motor	吸風馬達	1
3	28-03	Motor Bracket	馬達固定板	2
4	28-04	Nut	螺帽	4
5	28-05	Spring Washer	彈簧華司	4
6	28-06	Washer	華司	4
7	28-07	Screw	螺絲	4
8				
9	28-09	Pipe Clamp	緊縮環	2
10	28-10	Suction Pipe (Large)	吸風管(大)	1
11				
12	28-12	Barrel	收碎布桶	1
13	28-13	Barrel Bracket	收碎布桶固定架	1
14	28-14	Pipe Clamp	木螺絲	2
15				
26	28-26	Screw	螺絲	3
27	28-27	Washer	華司	6
28	28-28	Nut	螺帽	3
29	28-29	Saction Motor, Complete Set	吸風馬達組	1
30	28-30	Pipe Clamp	緊縮環	1
31	28-31	Suction Pipe (Small)	吸風管(小)	1
32	28-32	Suction Barrel, Complete Set	吸風桶組	1
33	28-33	Suction Motor, Complete Set	馬達吸風整組	1

管路圖

Air piping diagram



air pressure: 0.4 MPa - 0.5 MPa
(4 kgf/cm² - 5kgf/cm²)

管路圖

Air piping diagram

